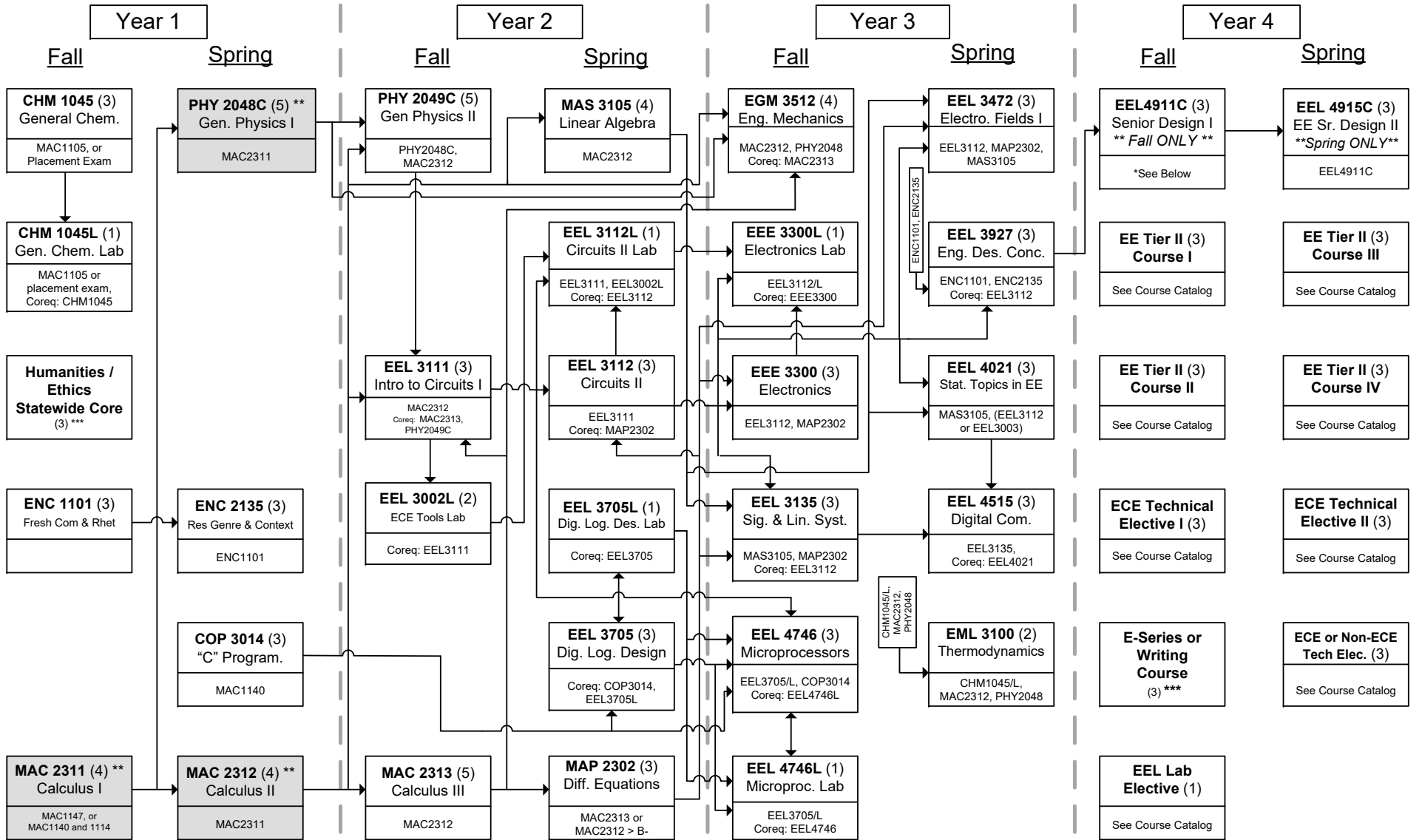




# FSU Electrical Engineering

## Fall 2018 and Later (revised Fall 2020)



**Summer**

<b>Soc Sci / History Statewide Core</b> (3) ***	<b>History / Soc Science Additional or Core</b> (3) ***	<b>Ethics / Humanities Additional or Core</b> (3) ***
--	--	--

**Legend & Notes**

<i>From Prerequisite Course</i> (from left)	<b>Course (cr)</b> Prerequisites
<i>From Co-requisite Course</i> (from top or bottom)	

\* EEL 4911C Prerequisites: EEL 3135, EEL 3927  
Co-requisites: EEE 3300, EEL 4746 (it is recommended that these be taken as prerequisites)

\*\* The shaded courses are pre-engineering courses and must be completed before a student can transfer into Electrical Engineering. EGN 1004L also required for students entering as freshmen.

\*\*\* Refer to the "FSU Liberal Studies Requirements for ECE Students" for detailed requirements and course lists. Students must take POS 1041 or AMH 2020 to satisfy Civic Literacy requirement.